

Mar.19,2018

# A Partnered Management and Restoration System of the Genbegawa Irrigation Canal



**NPO Groundwork Mishima  
CEO ; Toyohiro WATANABE**

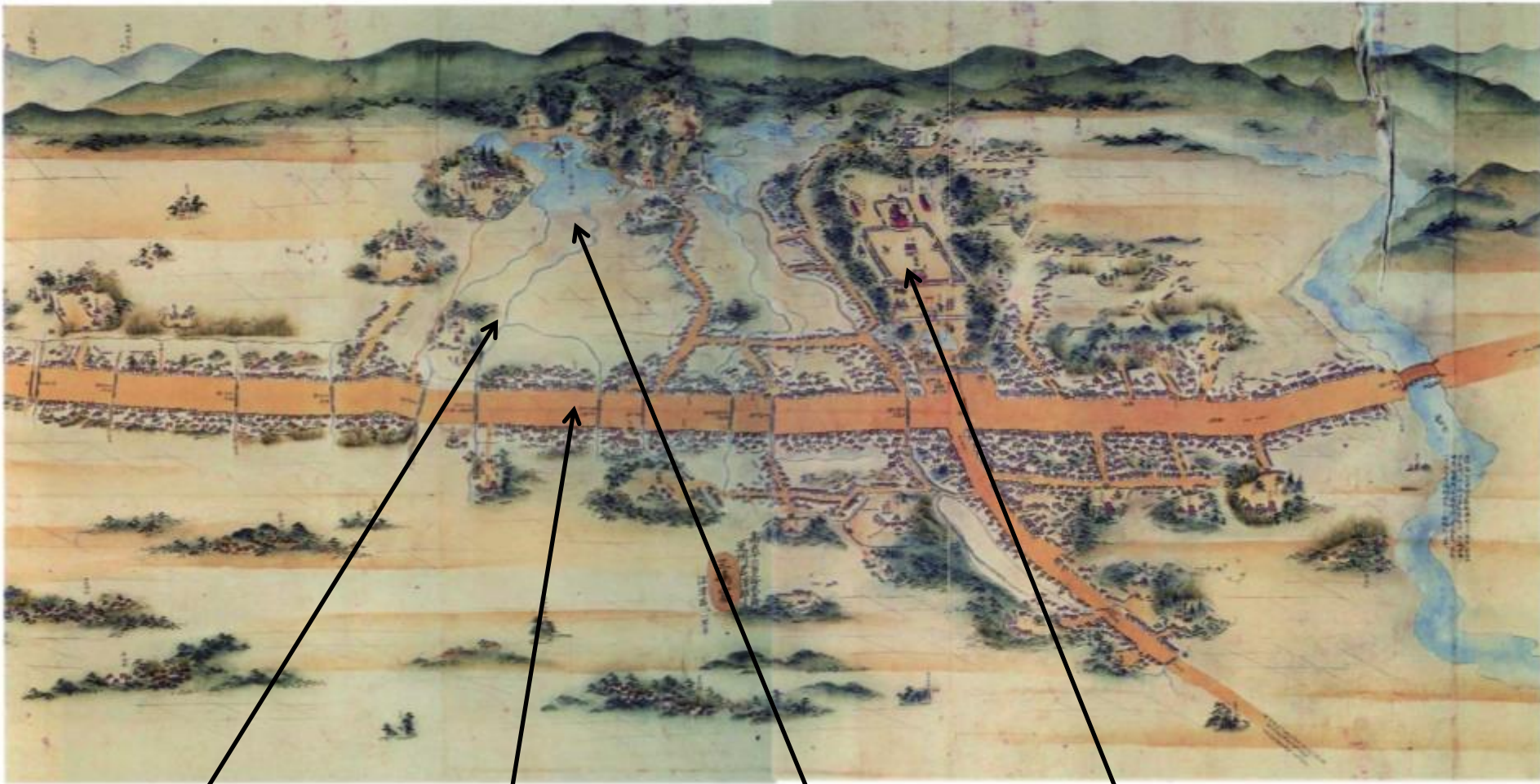


# Location





# Mishima in old days (200–300 years ago)



Genbegawa  
Canal

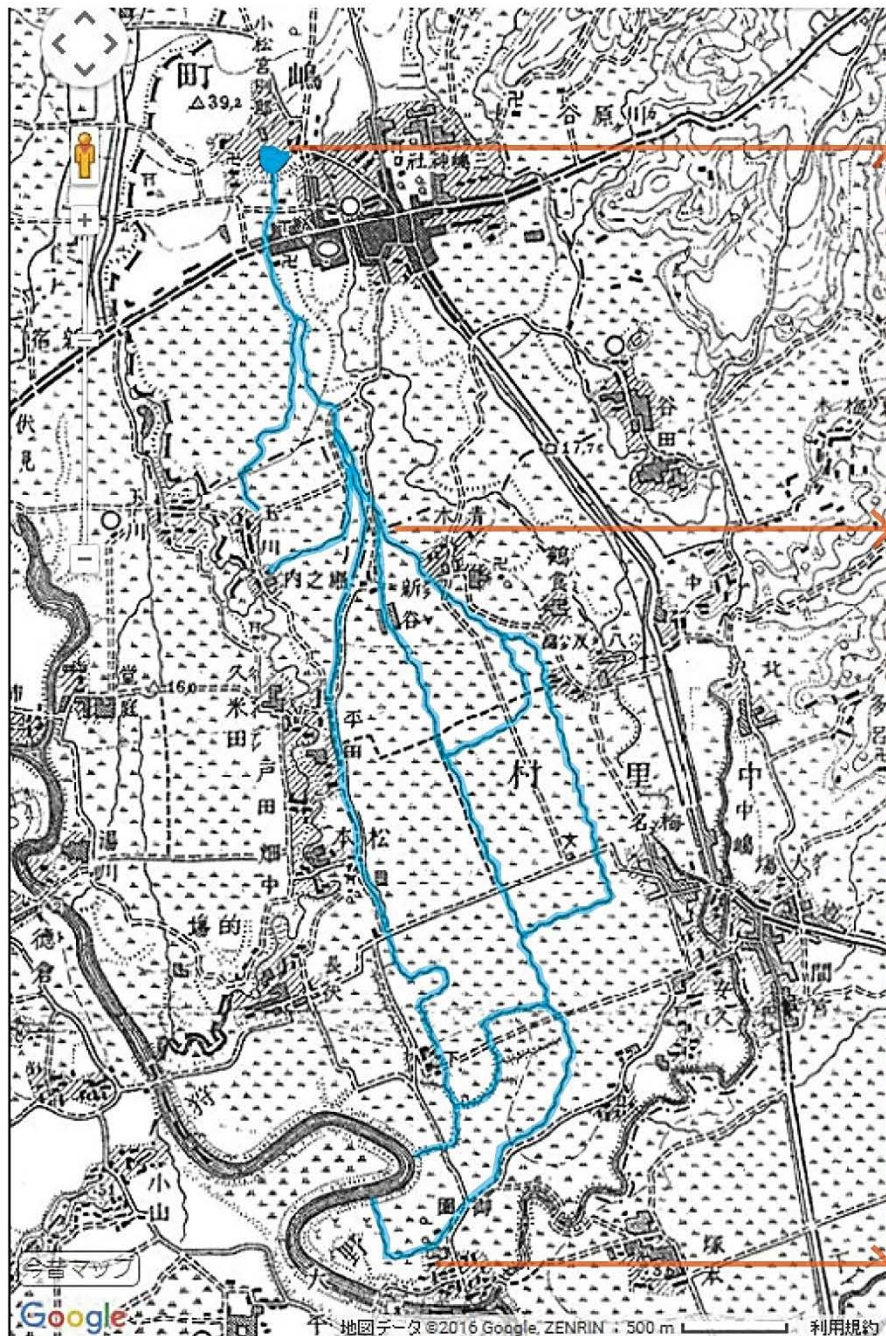
Tokaido  
Trail

Kohamaike  
pond

Mishima  
Shrine



# (Left) Nakazato district 1894-1915 ; (Right) Ditto 2016





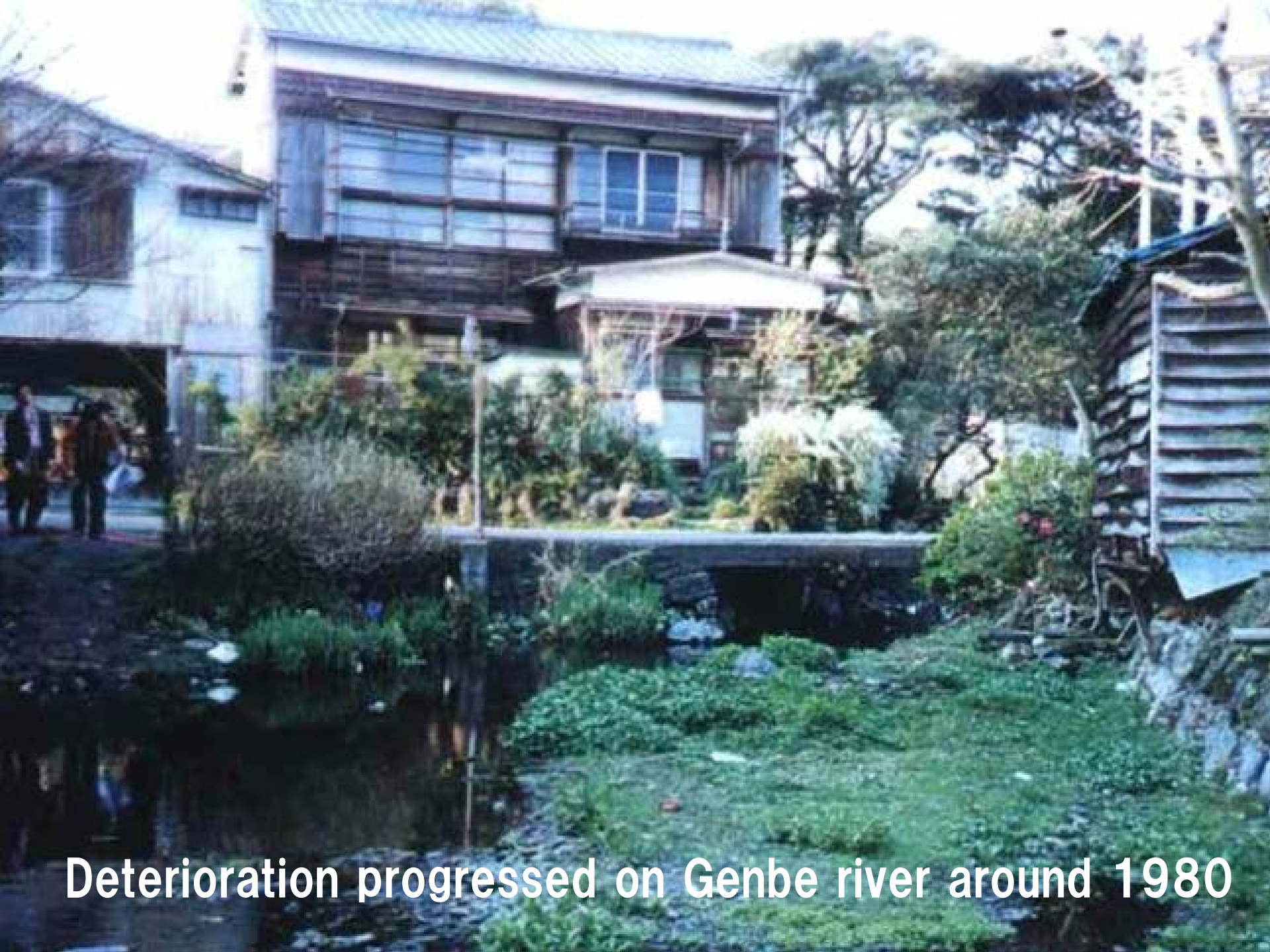




Genbe river with abundant water supply in 1955



Boys playing at watershed



**Deterioration progressed on Genbe river around 1980**





Deterioration progressed on Genbe river around 1980



# Network system through the mediation of “Groundwork Mishima”

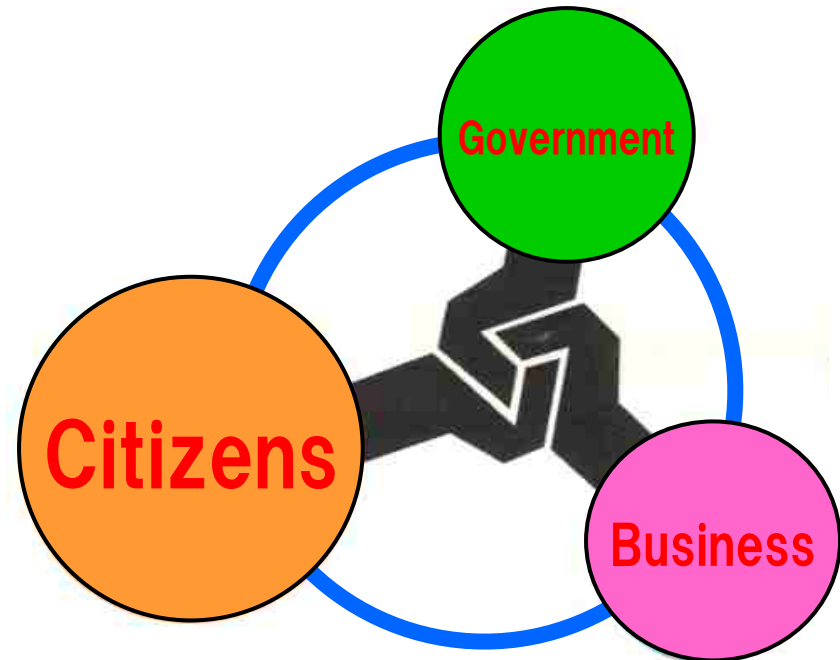
**Citizens** Work at sight  
in cooperation

**Business** Give citizens  
its specialty & equipment

**Government** Support them  
with fund, rules and supply

## Groundwork Mishima

Mediate them with its knowledge and experience



Groundwork Mishima



# Countless discussion held to improve the environment





# The result of citizen's effort



**Genbe river during  
1960-89**



**Scenery of the same place  
since 1990**



# Fireflies come back to the river







Children playing in Genbe river



## Luxuriant growth of *Utricularia*-*baikamo* (aqua plant in red list, recent scenery)



***Utricularia*-*baikamo***  
(aqua plant in red list, recent scenery)





**On-site training for  
children, searching water  
creatures  
(recent scenery)**





# Activity eliminating exotic species (recent scenery)



Thank you for listening! Obrigado!

